

LEGEND

	ELECTRICAL SERVICES SWITCHBOARD.
	SWITCHBOARD / CONTROL PANEL NOT PROVIDED AS PART OF THE ELECTRICAL SUBCONTRACT.
	SINGLE POWER OUTLET.
	DOUBLE POWER OUTLET.
	SPECIAL PURPOSE POWER OUTLET.
	SIGNAGE CONNECTION.
	SINGLE PHASE ISOLATOR.
	THREE PHASE ISOLATOR.
	HAND DRYER CONNECTION.
	FLOOR BOX, TYPE AS NOTED.
	SERVICES DUCT, TYPE AS NOTED.
	RELOCATED ELECTRICAL SERVICES AS NOTED.
	PROXIMITY DETECTOR.
	LIGHTING CONTROL SWITCH PANEL x.
	ONE-WAY LIGHT SWITCH.
	TWO-WAY LIGHT SWITCH.
	CIRCUIT LINE.
	SWITCH LINE.
	POWER CIRCUIT DESIGNATION. DENOTES DB AND CIRCUIT.
	LIGHTING CONTROL CHANNEL REFERENCE.
	ELECTRICAL EQUIPMENT AS NOTED.
	RJ45 COMMUNICATIONS OUTLET.
	ELECTRIC STRIKE.
	FUSE.
	SINGLE PHASE.
	THREE PHASE.
	CURRENT TRANSFORMER C/W REMOVABLE LINK.
	FUSE LINK.
	COMBINED FUSE SWITCH.
	CIRCUIT BREAKER.
	ISOLATOR.
	RESIDUAL CURRENT DEVICE.
	CONTACTOR – NORMALLY OPEN.
	CONTACTOR – NORMALLY CLOSED.
	REFER TO DETAIL NOTED FOR THE AREA SHOWN HATCHED. ADDITIONAL OUTLETS & FITTINGS MAY BE SHOWN ON DETAIL.
	E1: RECESSED LED EMERGENCY LIGHT.
	E2: SUSPENDED CAN LED EMERGENCY LIGHT.
	EX: EMERGENCY LED EXIT LIGHT.
	EX WP: EMERGENCY WEATHERPROOF LED EXIT LIGHT.
	Lx: LIGHT FITTING C/W NON-MAINTAINED EMERGENCY BATTERY PACK. TYPE AS NOTED.
	L1: OVERHEAD CUPBOARD SPLASHBACK LED STRIP LIGHT.
	L2: 600 x 600 T-BAR LED FLAT PANEL.
	L3: 300 x 1200 T-BAR LED FLAT PANEL.

LEGEND

	L4: 600 x 600 RECESSED PLASTER BOARD LED FLAT PANEL.
	L5: 300 x 1200 RECESSED PLASTER BOARD LED FLAT PANEL.
	L6: CIRCULATION RECESSED DALI DIMMABLE DOWNLIGHT.
	L7: DECORATIVE SWITCH PENDANT.
	L8: RECESSED SWITCHED DOWNLIGHT.
	L9: RECESSED DALI DIMMABLE DOWNLIGHT.
	L10: SUSPENDED BULKHEAD SWITCHED LED MODULE LIGHT BOX.
	L11: AMENITY SWITCHED DOWNLIGHT.
	L12: EXISTING DISPLAY JOINERY LIGHT RELOCATED.
	L13: UNDER COUNTER STRIP LIGHT.
	L14: BAR PELMET STRIP LIGHT.
	L15: CEILING COFFER STRIP LIGHT.
	L16: COUNTER PELMET STRIP LIGHT.
	L17: CEILING FEATURE LED LIGHTS.
	L18: DECORATIVE PENDANT.
	L19: DECORATIVE PENDANT.
	L20: DECORATIVE PENDANT.
	L21: DECORATIVE WALL LIGHT.
	L22: DECORATIVE WALL LIGHT.
	L23: DECORATIVE WALL LIGHT.
	L24: DECORATIVE WALL LIGHT.
	L25: DECORATIVE WALL LIGHT.
	L26: DECORATIVE WALL LIGHT.
	L27: SURFACE TRACK C/W SPOT LIGHTS.
	L28: SURFACE TRACK C/W SPOT LIGHTS.
	L29: SURFACE TRACK C/W SPOT LIGHTS.
	L30: CEILING PELMET STRIP LIGHT.
	L31: RECESSED DOWNLIGHT, HIGH OUTPUT.
	L32: RECESSED DOWNLIGHT, MEDIUM OUTPUT.
	L33: FUNCTION ROOM RECESSED DOWNLIGHT.
	L34: REAR BAR DISPLAY STRIP LIGHT.
	L35: EXISTING DOWNLIGHT TO REMAIN AS IS.
	L36: VANITY MIRROR STRIP LIGHT.
	L37: DOWNLIGHT, LOW OUTPUT.
	L38: ADJUSTABLE CAN DOWNLIGHT.
	L39: SURFACE CAN DOWNLIGHT.
	L40: BRICK LIGHT.
	L41: FLOOR MOUNTED PENDANT.
	L42: STAIR TREAD LIGHT.
	L43: COUNTER LED STRIP LIGHT.
	L44: ENTRY DOWNLIGHT.
	L45: EXISTING WALL LIGHT TO BE REPLACED.
	FL1: FESTOON LIGHTING.
	CF1: CEILING FAN TYPE 1.

LEGEND

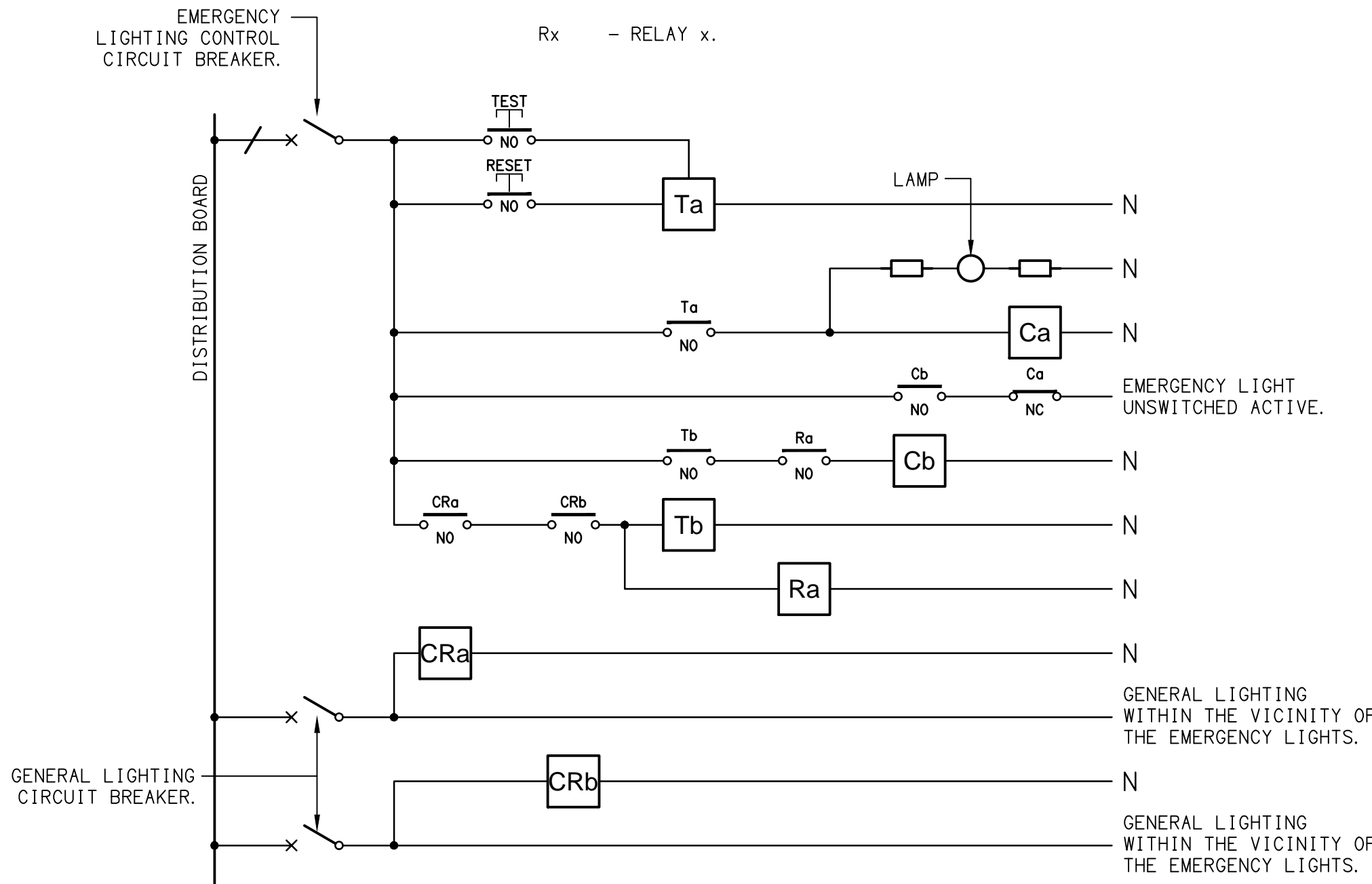
	H1: 1125 LONG LINEAR SUSPENDED HEAT LAMP, UPPER SERVERY SHELF.
	H2: 1125 LONG LINEAR SUSPENDED HEAT LAMP, LOWER SERVERY SHELF.
	H3: 1725 LONG LINEAR SUSPENDED HEAT LAMP, UPPER SERVERY SHELF.
	H4: 1725 LONG LINEAR SUSPENDED HEAT LAMP, LOWER SERVERY SHELF.
	H5: PENDANT HEAT LAMP.
	H6: LINEAR HEAT LAMP, LOWER SERVERY SHELF.
	H7: AREA HEATER, BEAM MOUNTED.
	H8: AREA HEATER, SUSPENDED.
	TV: TV OUTLETS WITH TV SIZE AS NOTED.

NOTE

ALL ELECTRICAL PENETRATIONS THROUGH THE ROOF SHEETING ARE TO BE IN LINE WITH THE STRUCTURAL OR MECHANICAL SERVICES PENETRATIONS TO AVOID DEDICATED FLASHINGS FOR THE ELECTRICAL SERVICES.

EQUIPMENT:

- TEST – TEST PUSH BUTTON MOUNTED ON THE DISTRIBUTION BOARD ESCUTCHEON.
RESET – RESET PUSH BUTTON MOUNTED ON THE DISTRIBUTION BOARD ESCUTCHEON.
LAMP – AMBER TEST INDICATING LAMP MOUNTED ON THE DISTRIBUTION BOARD ESCUTCHEON.
Ta – ADJUSTABLE 0–3 HOUR TIMED RELAY.
Tb – 15 MINUTE RUN-ON TIMER TO OPERATE UPON THE RETURN OF MAINS POWER.
Cx – CONTACTOR x.
CRx – CONTROL RELAY x.
Rx – RELAY x.

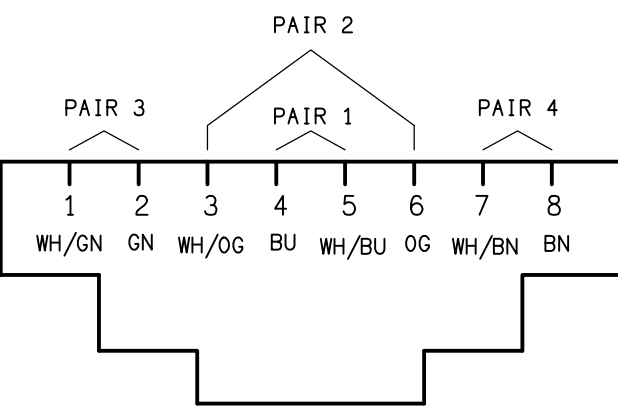


NOTES

1. THE EMERGENCY LIGHT UNSWITCHED ACTIVE / GENERAL LIGHTING SWITCHED ACTIVE CIRCUIT ARRANGEMENT AND CONTROL IS TYPICAL FOR ALL CIRCUITS SUPPLYING EMERGENCY LIGHTS.
2. PROVIDE ADDITIONAL CONTROL RELAYS (CRx) CONFIGURED AS PER CRa AND CRb FOR ALL ADDITIONAL LIGHTING CIRCUITS THAT SUPPLY LIGHTS IN THE VICINITY OF THE EMERGENCY LIGHTS.

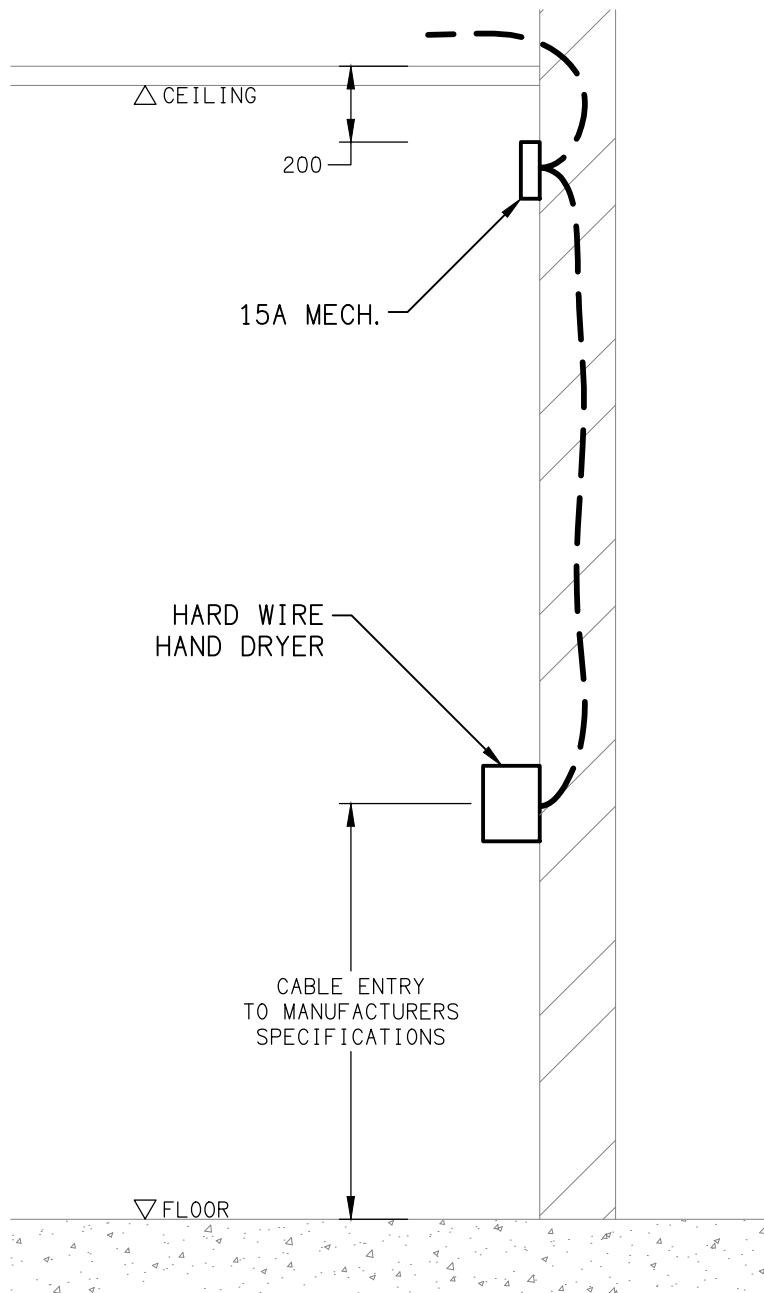
SCHEMATIC

EMERGENCY LIGHTING
NOT TO SCALE



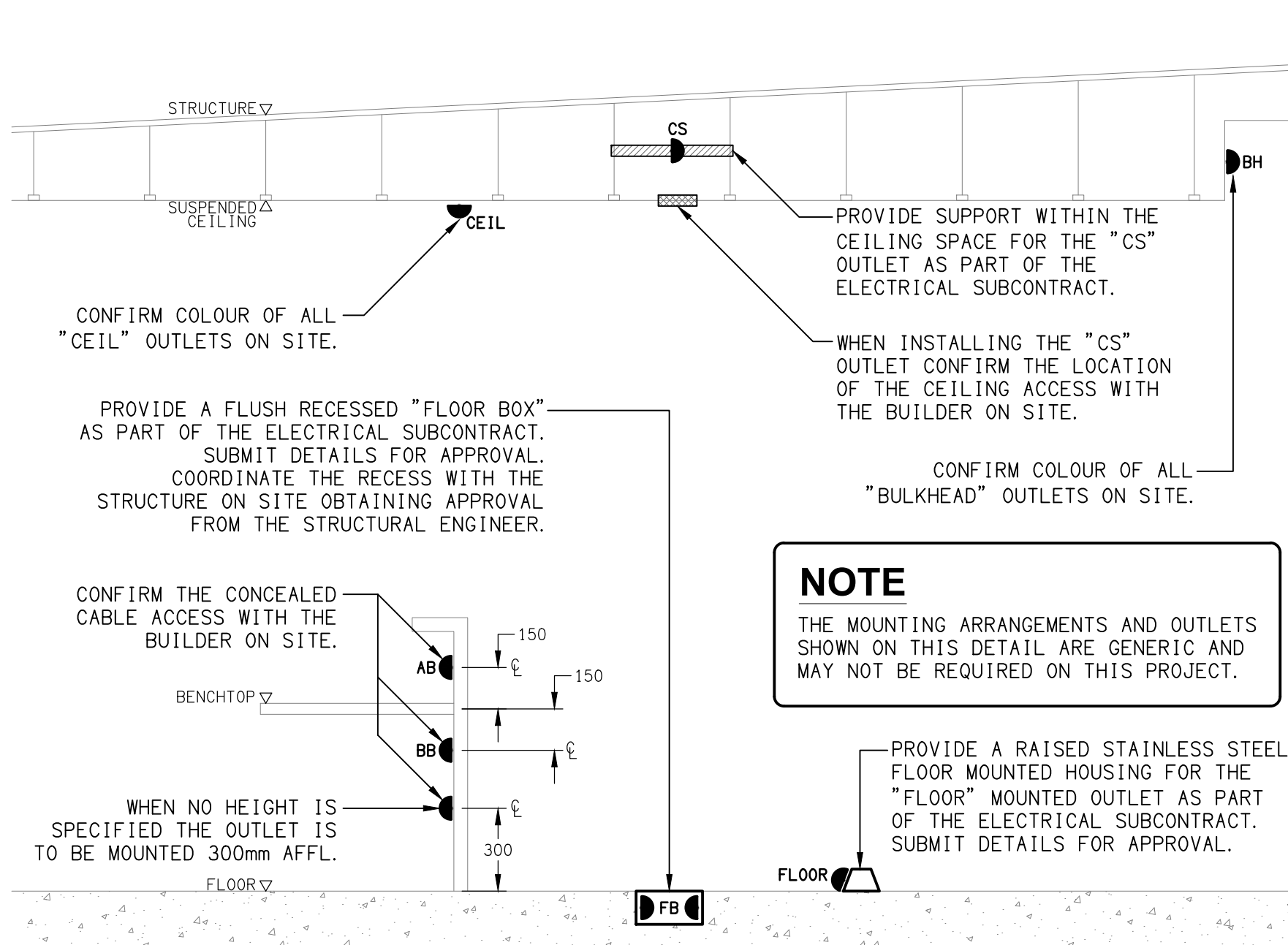
SCHEMATIC

RJ45 PINOUT CONFIGURATION
NOT TO SCALE



DETAIL

HAND DRYER CONNECTION
NOT TO SCALE



DETAIL

TYPICAL OUTLET MOUNTINGS
NOT TO SCALE

NOTE

THE MOUNTING ARRANGEMENTS AND OUTLETS SHOWN ON THIS DETAIL ARE GENERIC AND MAY NOT BE REQUIRED ON THIS PROJECT.

THE COPYRIGHT OF THIS DRAWING REMAINS THE PROPERTY OF THE ELECTRICAL DESIGN GROUP.

USE FIGURED DIMENSIONS IN PREFERENCE TO SCALE.

ALL DIMENSIONS TO BE VERIFIED ONSITE.

G	CONSTRUCTION	11/07/2025
REV:	DESCRIPTION:	DATE:

ELECTRICAL DESIGN GROUP
ELECTRICAL BUILDING SERVICES CONSULTANTS

BRISBANE: P.O. Box 15 Sherwood Qld 4075
Phone: (07) 3278 4375
Email: brisbane@edg.net.au
Web: www.edg.net.au

ELECTRICAL DESIGN GROUP BRISBANE PTY LTD
ACN 092 710 793

TRADING AS:
ELECTRICAL DESIGN GROUP

PROJECT:

SUNNYBANK COMMUNITY SPORTS CLUB

SITE ADDRESS:

470 McCULLOUGH STREET
SUNNYBANK

SCALE: SHEET SIZE:

NOT TO SCALE AT A1

DRAWING TITLE:

**ELECTRICAL SERVICES
LEGEND, SCHEMATICS
& DETAILS**

PROJECT NO: DRAWING NO: REVISION:

C3179a E01 G